



STATE OF THE
COLLEGE 2017



Dean's Welcome

Cheryl Acquerberg

New Faculty

Educational
Studies



Minjung Kim, Assistant Professor,
Quantitative Research and Measurement (QREM)



Scott Graves, Associate Professor,
School Psychology



Jessica Logan, Assistant Professor,
Quantitative Research and Measurement (QREM)

New Faculty

Human
Sciences



Leeann Lower, Assistant Professor



Julie Hillery, Associate Professor

New Faculty

Teaching
and
Learning



Peter Sayer, Associate Professor,
Bilingual and Dual Language Education



Mandy M. Smith, Assistant Professor,
Science Education

5 COLLEGE HIGHLIGHTS



1

Early Childhood

- ◆ one of top five programs in the country
no official rankings

RELEVANT METRICS



> **\$35M**

research
funding in last
5 years.

> **25**

faculty and
research
associates
engaged in
teaching and
research.

Interdisciplinary

approach with EHE
Departments of Teaching
and Learning, Human
Sciences, Educational
Studies, College of Social
Work, Nationwide
Children's Hospital, and
the U.S. Department of
Defense.

2

Teacher/Educator Preparation

- ❑ Nationally ranked **18th** College of Education among **376** universities and **10th** among public universities in US News & World Report 2016
- ❑ Noted strengths in subspecialties of Math Education, Foreign Language Education and English as a Second Language instruction.

\$38M research in last 5 years

2nd in Vocational Education

8th in Student Counseling and Personnel Service

9th in Curriculum and Instruction

11th in Secondary Teacher Education

11th in Elementary Teacher Education

11th in Special Education

11th in Administration/Supervision

Interdisciplinary partnerships with Colleges of Engineering, Arts and Sciences, Food, Agricultural and Environmental Sciences (FAES) and regional campuses



3

Community Engagement

- Star House
- Schoenbaum Family Center
- Crane Center for Early Childhood Research and Policy
- Early Headstart
- Honda North America ~ English language training services
- State of Ohio SNAP-Ed program



Over 25 active partnerships



>\$50M research and programmatic funding in last five years



Early Childhood Educator Professional Preparation Pipeline will award 100 scholarships for a total of \$3.9M to complete Bachelor's degrees to urban Columbus residents



Interdisciplinary research and programming with Colleges of Social Work, Veterinary Medicine, FAES, Medicine, Arts and Sciences

Social Justice and Community Transformation

with Columbus neighborhoods:

- Weinland Park
- Linden
- Franklinton
- South Columbus, Reeb Center

4

Reading and Literacy

- ❖ acclaimed as one of the top five programs in the country



\$5M +

research funding in last five years

#1

reading intervention program,
Reading Recovery, by What
Works Clearinghouse,
Washington D.C.

25 +

world renowned faculty and
research associates

International Partnerships

Mexico, Iceland, New Zealand,
Australia, Brazil, European Union

5

Health and Wellness/ Human Physiology

More than \$7M research funding in the last 5 years

Kinesiology is rated #6 nationally 2016

Nutrition is rated #8 in the last National Academy of Sciences ranking

Interdisciplinary work in Metabolomics Discovery Theme with FAES, Medicine, Biochemistry (A&S)

OSU Suicide Prevention collaboration with Student Life and Counselor Education program

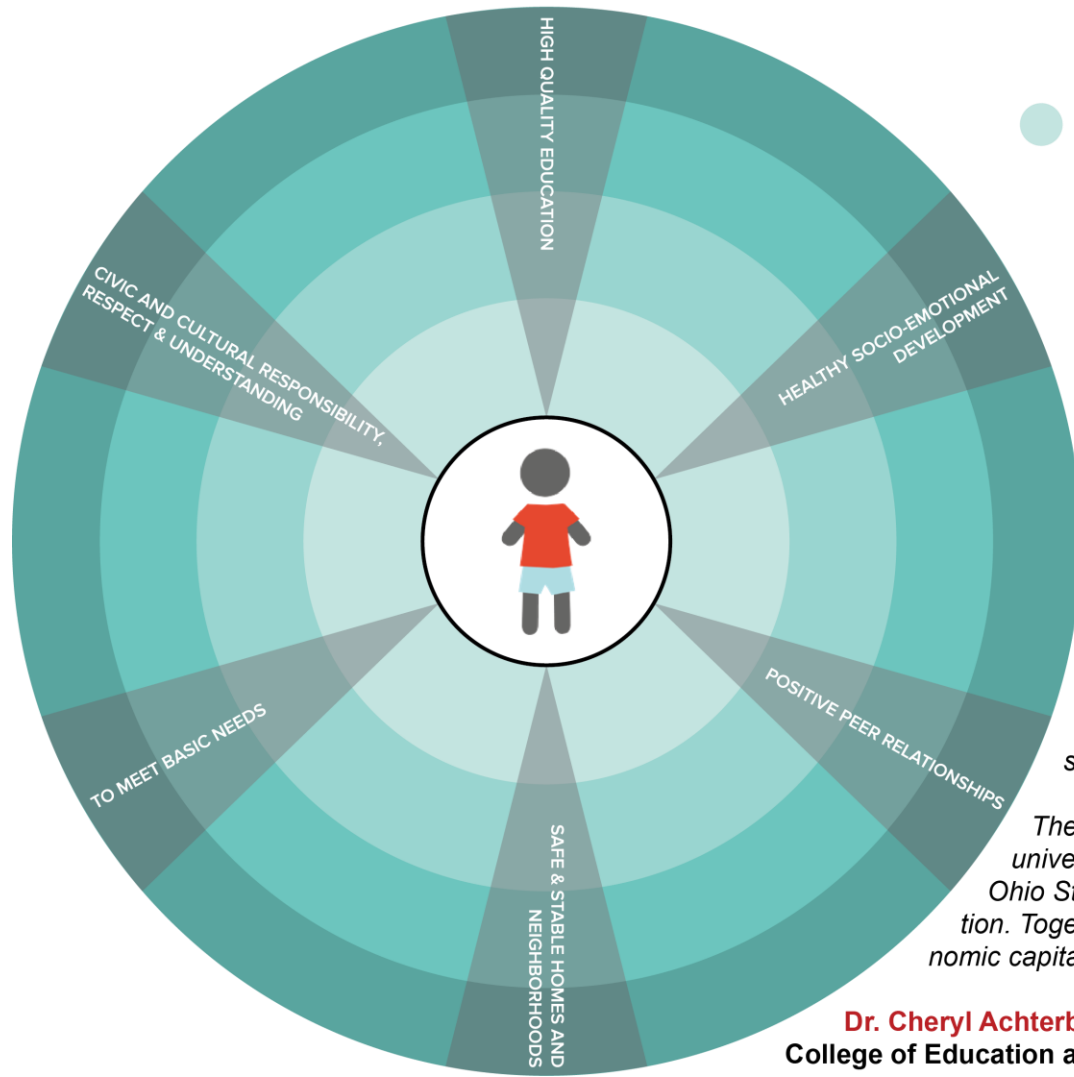
Transformational research with the Colleges of Medicine including Sports Medicine, Dentistry, FAES, Arts and Sciences, and the US Department of Defense

Overview of Strategic Plan

Time and Change

- Teaching and Learning
- Access, Affordability and Excellence
- Research and Creative Expression
- Academic Health Care
- Operational Excellence and Resource Stewardship

The Child First



The Contexts in which We Work

- **HOME** Environment:
 - Parents/ Caregivers
 - Siblings
 - Parents of parents, caregivers, or siblings
- **LOCAL** Environment:
 - Neighborhood residents
 - Neighborhood businesses
 - Municipal organizations/ government
 - Volunteer agencies/ organizations
- **LEARNING** Environment:
 - Schools/ institutions
 - Informal educators/ institutions
 - Policy makers/ government
 - Industry/ future employers
- **STATE** Environment:
 - Governor/ legislators/ lobbyists
 - Social & State agencies and foundations
 - Judiciary system/ policy
 - Industry
- **NATIONAL** Environment:
 - Executive branch/ legislators/ lobbyists
 - National and Regulatory agencies
 - Judiciary system/ policy
 - Industry
 - Research Institution/ Foundations/ agencies

The challenge of meeting all children's needs presents the modern crisis of our society—a problem so complex that no single or conventional solution will solve it. We urgently need a deeply collaborative, all-hands-on-deck, interdisciplinary approach. The Ohio State University can be the difference maker in this space. Ohio State can do what no other university can. We offer the depth and breadth of research and innovation that positions us with our stakeholders to move Columbus and serve as a national model.

The moment is now to create an unparalleled team of committed community and university stakeholders who can leverage our collective expertise and resources. Ohio State can be the first land-grant university to lead this kind of major transformation. Together, we can ensure that Columbus develops the social, cognitive, and economic capital to sustain our city and state in the future.

Dr. Cheryl Achterberg, Dean
College of Education and Human Ecology

Thank you for joining us for the 2017 State of the College



THE OHIO STATE UNIVERSITY

COLLEGE OF
EDUCATION AND HUMAN ECOLOGY